

Article accepted by postmaster:

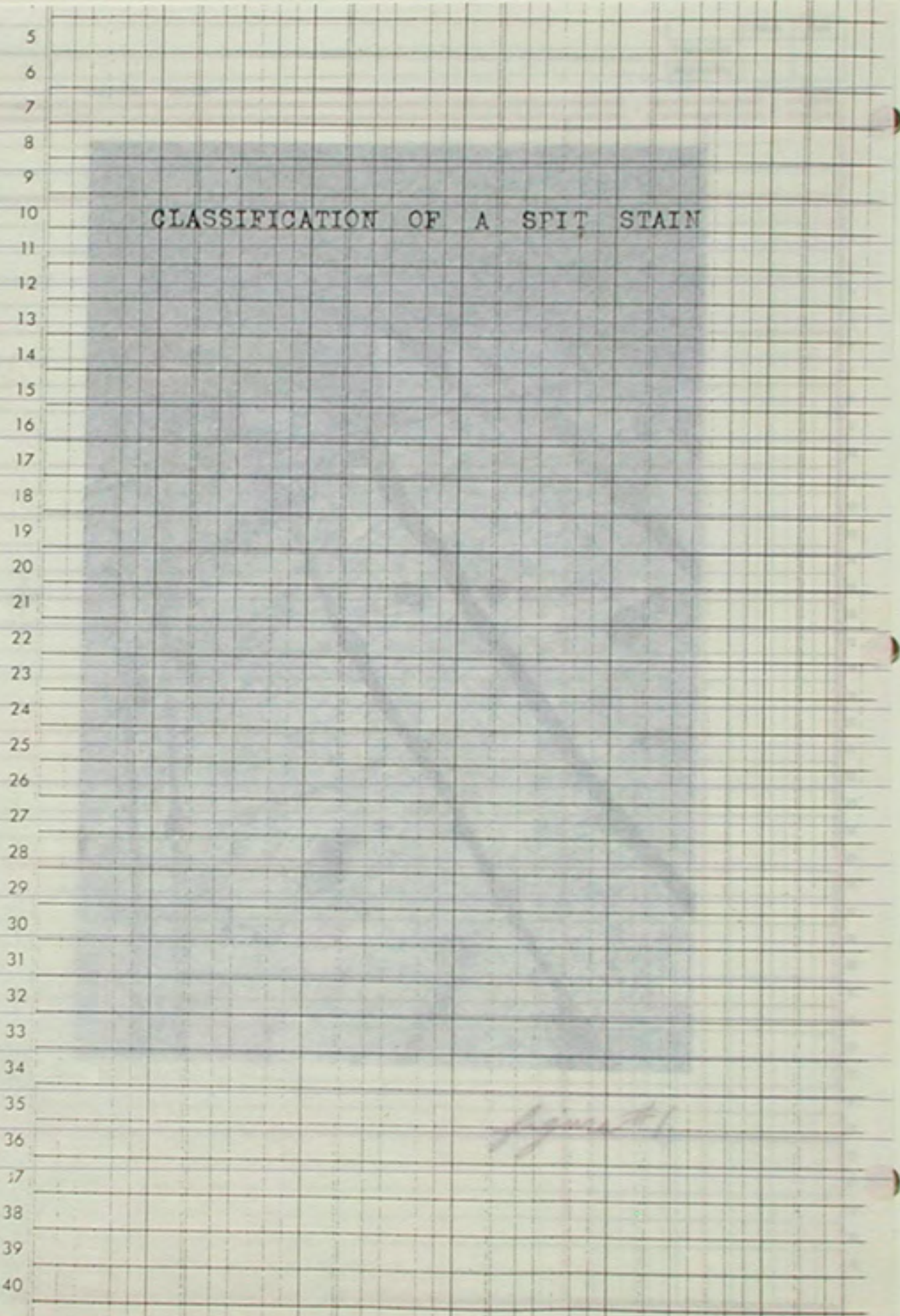
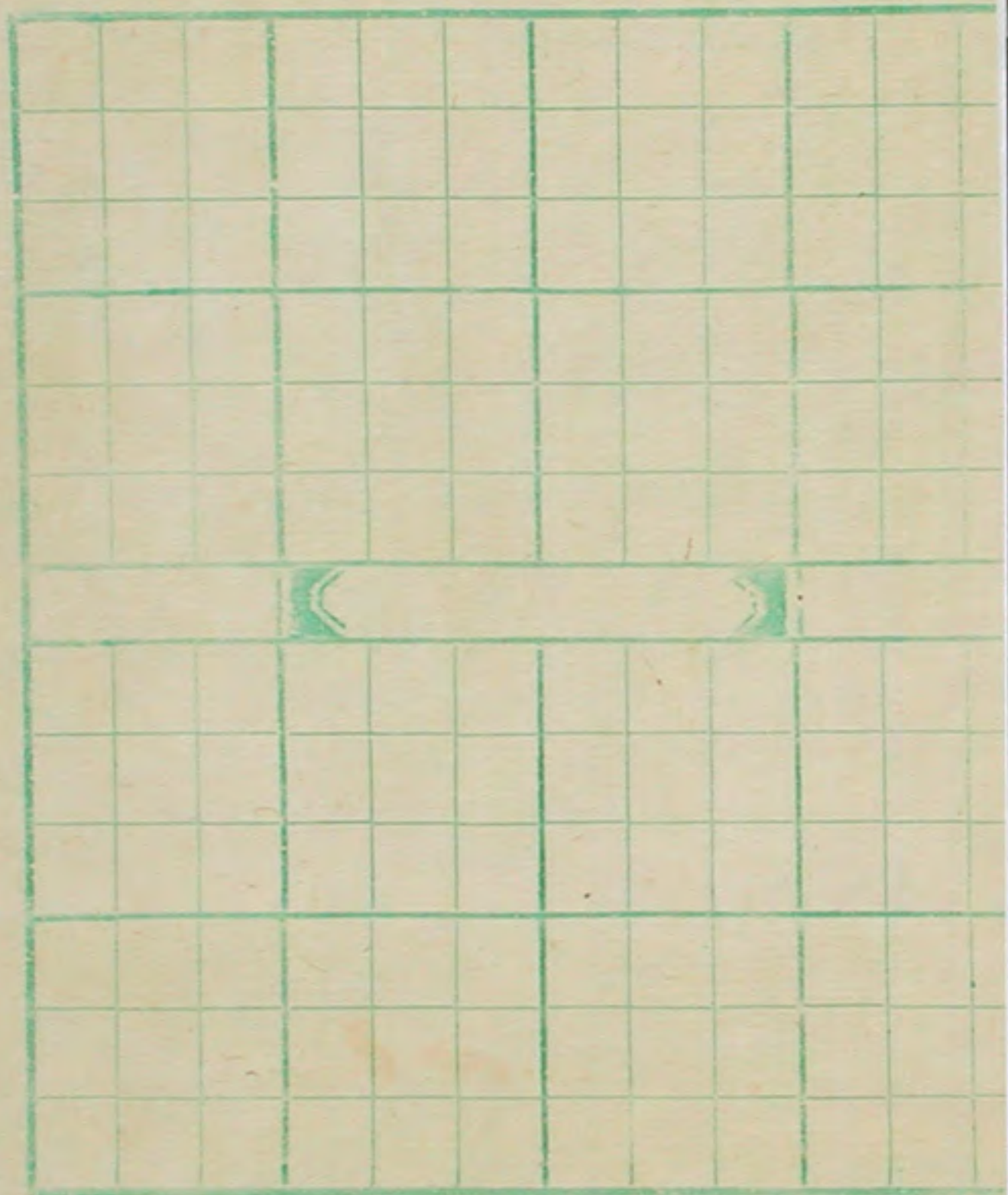
Per *J. Smith*

CLASSIFICATION OF A SPIT STAIN

The amount to be remitted to sender
must be entered by sender.

The C.O.D. fee, and the amount of postage paid on
article (exclusive of C.O.D. fee), if not entered by sender,
must be entered separately on face side of the mailing
office and sender's receipt coupons by accepting
employee.

P. M. Mailing Office. Detach coupons; retain one year. File coupons numerically.



CLASSIFICATION OF A SPIT STAIN

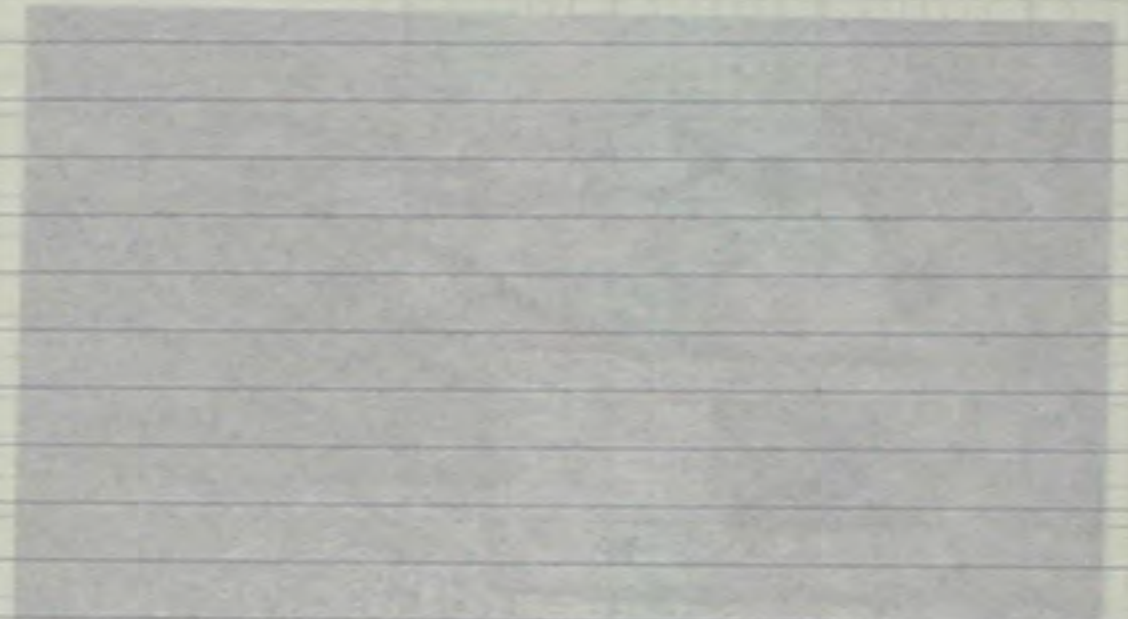
Prepared By	Initial	Date
Approved By		

© WILSON JONES 5750 GREEN TOW BLUFF



figure #1

Prepared By	Initials	Date
Approved By		



WHAT IS A SPIT STAIN

--The spit stain is a natural occurrence created by people living in unnatural settings.

The spit stain can be defined as clusters of residue found on pavements which, when viewed dissociatively from its context and origin, can bring visual pleasure to the urban dweller.

The analyzation and classification of a spit stain falls under the ~~area~~ ^{study} of garbology.

Through garbology, human discards and waste patterns contributes to the understanding of people both ~~the~~ ⁱⁿ past and present.

Spit

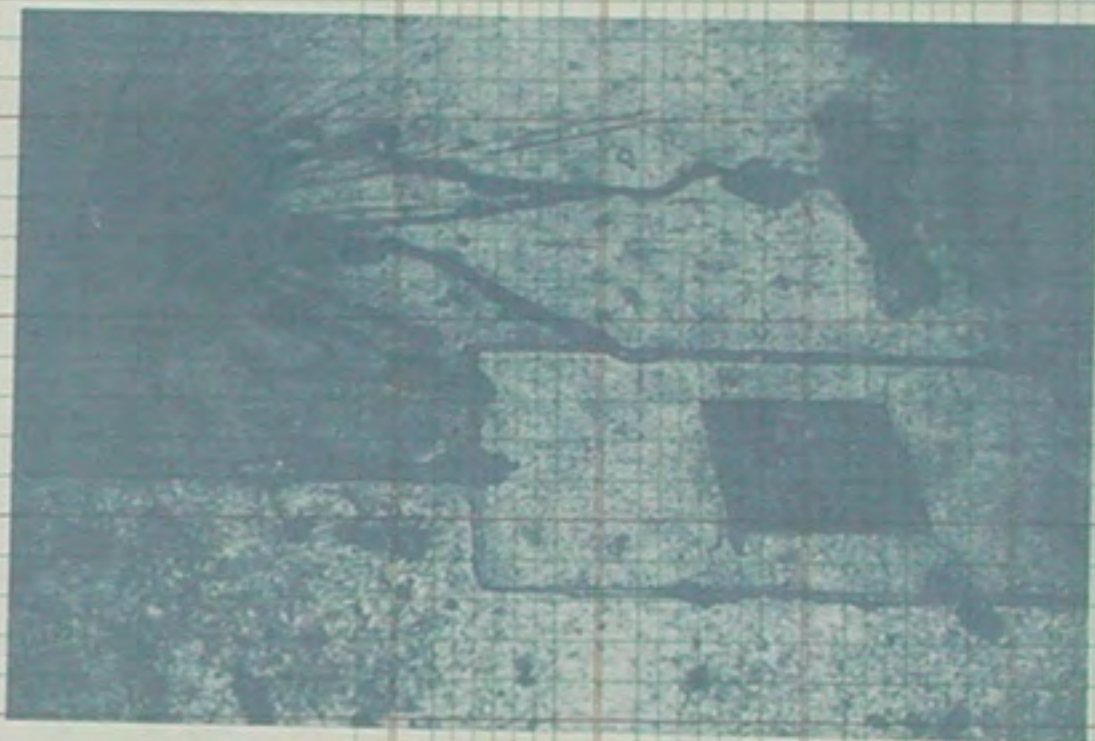


figure #2

What is a split stain?
 --The split stain is a natural occurrence created by people living in unusual settings.

The split stain can be defined as clusters of residue found on pavements which, when viewed, dissociate from its context and origin, can bring visual pleasure to the urban dweller.

The analysis and classification of a split stain falls under the case of exfoliation.

Through exfoliation, human discards and waste patterns contribute to the understanding of residential behavior and present a part of the environment.

Prepared By _____
Approved By _____

Initials _____
Date _____

Eye Ease National Brand 45-412 Eye Ease classification of a spit stain

Made in USA

Prepared By _____
Approved By _____

IDENTIFYING A SPIT STAIN

--Spit stains are most commonly found on light grey, smooth concrete surfaces.

--The most common spit stains tend to be black or dark grey in color.

--The spit stain is a misnomer in that it is not exclusively the result of spit.

Classification Categories:

- Round RAISED stain

- Free-Form Stains

Free-form stains include the diffused, oily stain and the piss stain, and the stain monster

- STAINED LANDSCAPE

- Other categories of Underfoot Materialization

IDENTIFYING A SPILT STAIN

--Spilt stains are most commonly found on light grey, smooth concrete surfaces.
--The most common spilt stains tend to be black or dark grey in color.
--The spilt stain is a mineral in that it is not exclusively the result of spilt.

Classification Categories

- Round/oval stain
- Five-Ton stain

Free-form stains include the dispersed, oily stains and the plain stains, and the stain material

STAINED HANDS

- Other categories of handprint materialization

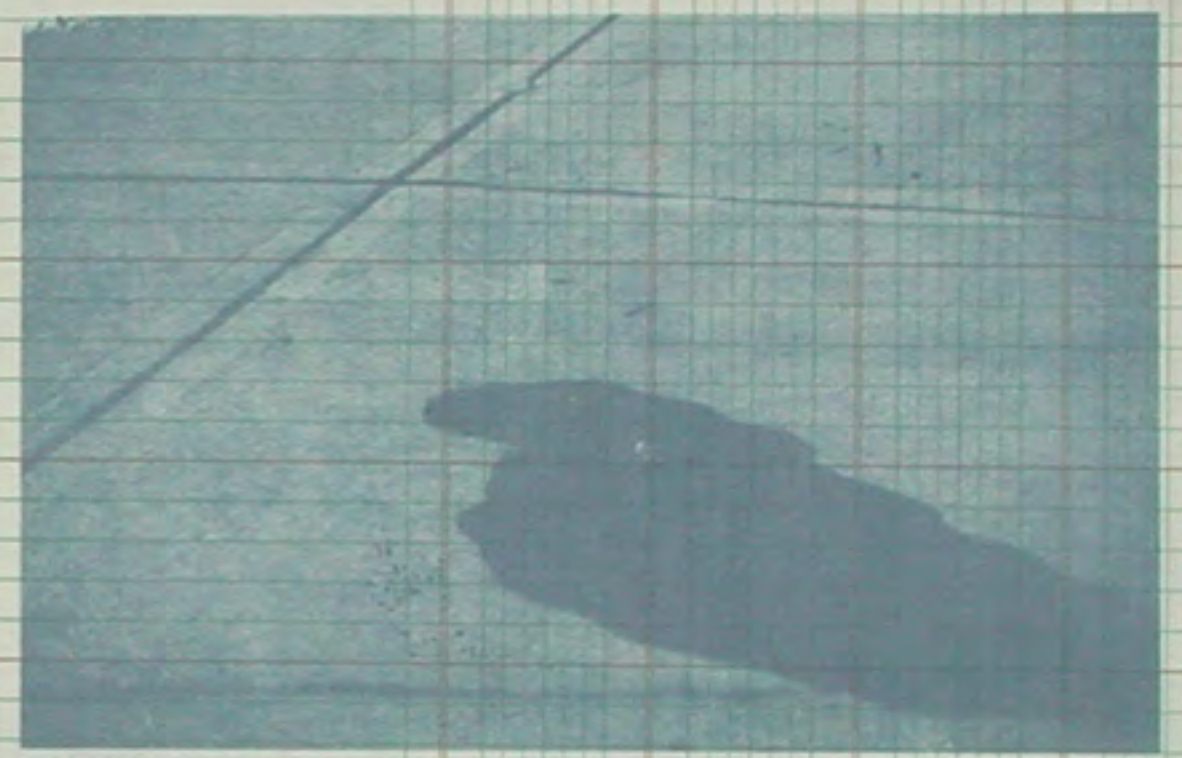
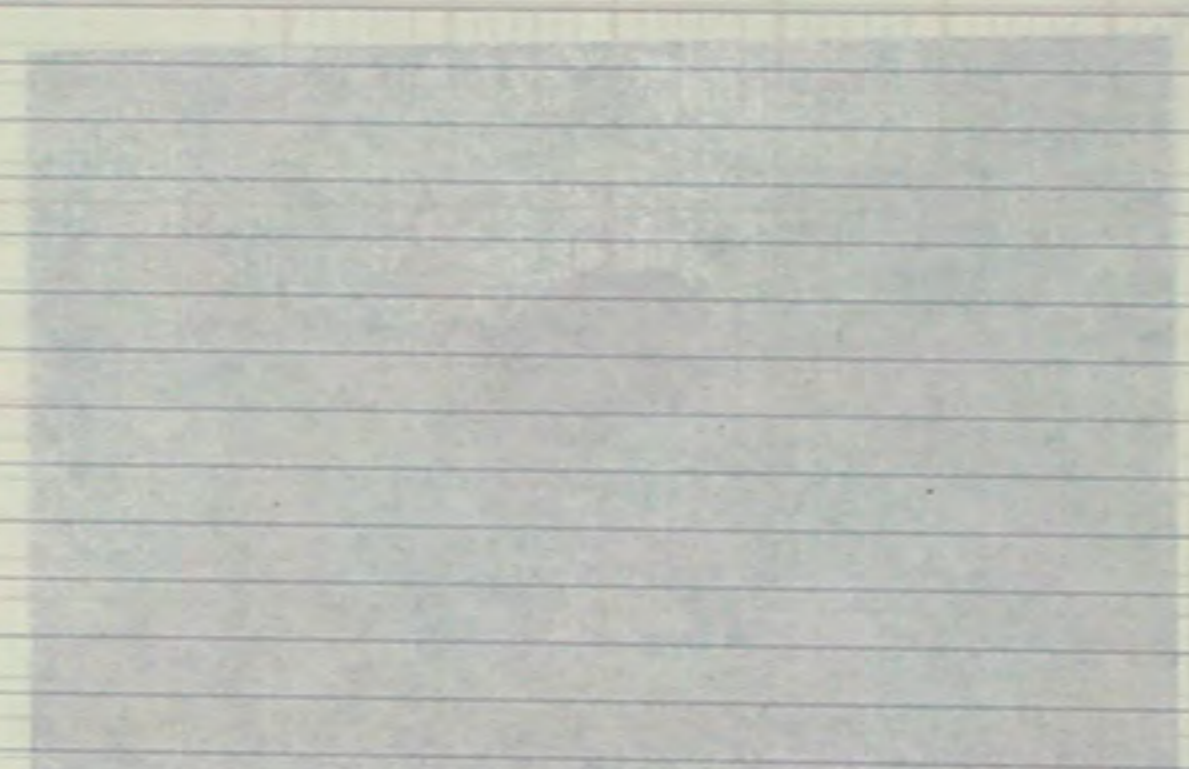


fig #3

round, raised stain



The round raised spit stain is the most commonly found stain. This round, slightly textural stain is a deposit which is most likely the result of discarded gum. They tend to form clusters of polk-a-dot patterns around doorways and bus stops since the tendency to discard increases where people exit, enter and wait.

These are the most permanent of all stains.

Prepared By
Approved By

Initials Date
Prepared By
Approved By

round, raised stain

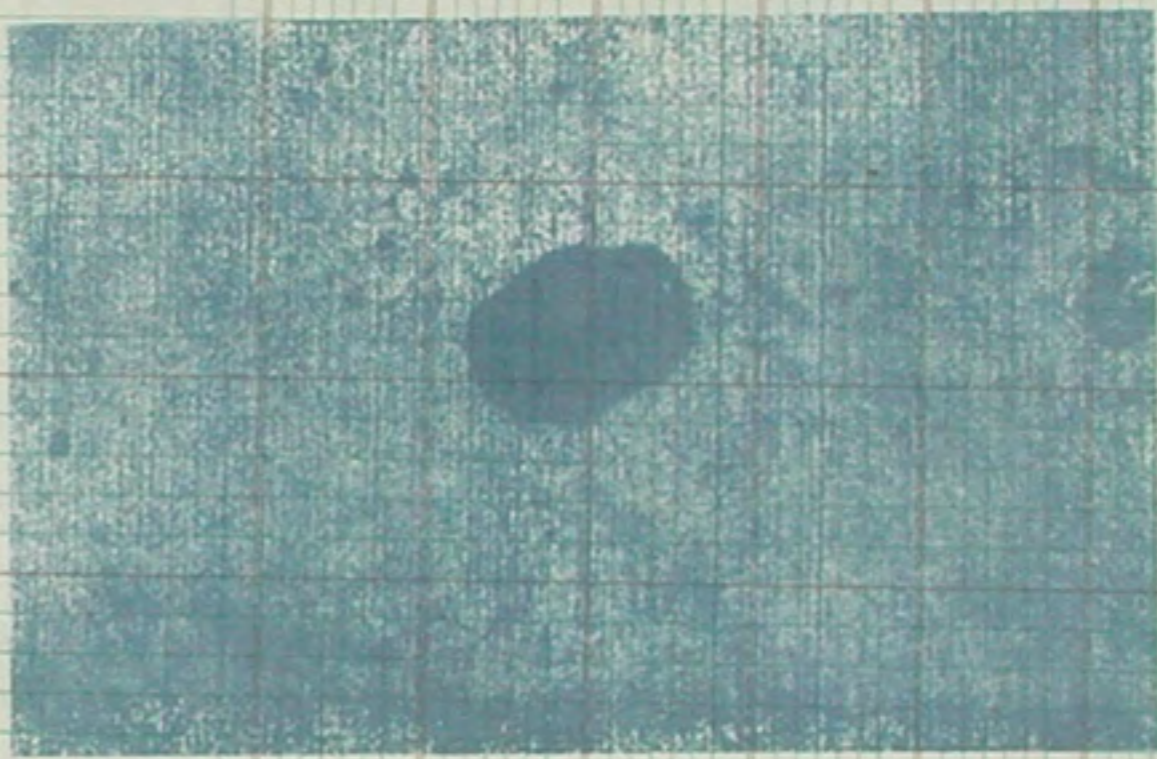


figure #4

The round raised stain is the most commonly
found stain. This round, slightly textured stain
is a deposit which is most likely the result of
discarded gum. They tend to form clusters of
polk-a-dot patterns around doorways and bus stops
since the tendency to discard increases where
people exit, enter and wait.
These are the most permanent of all stains.

Prepared By	Initials	Date
Approved By		

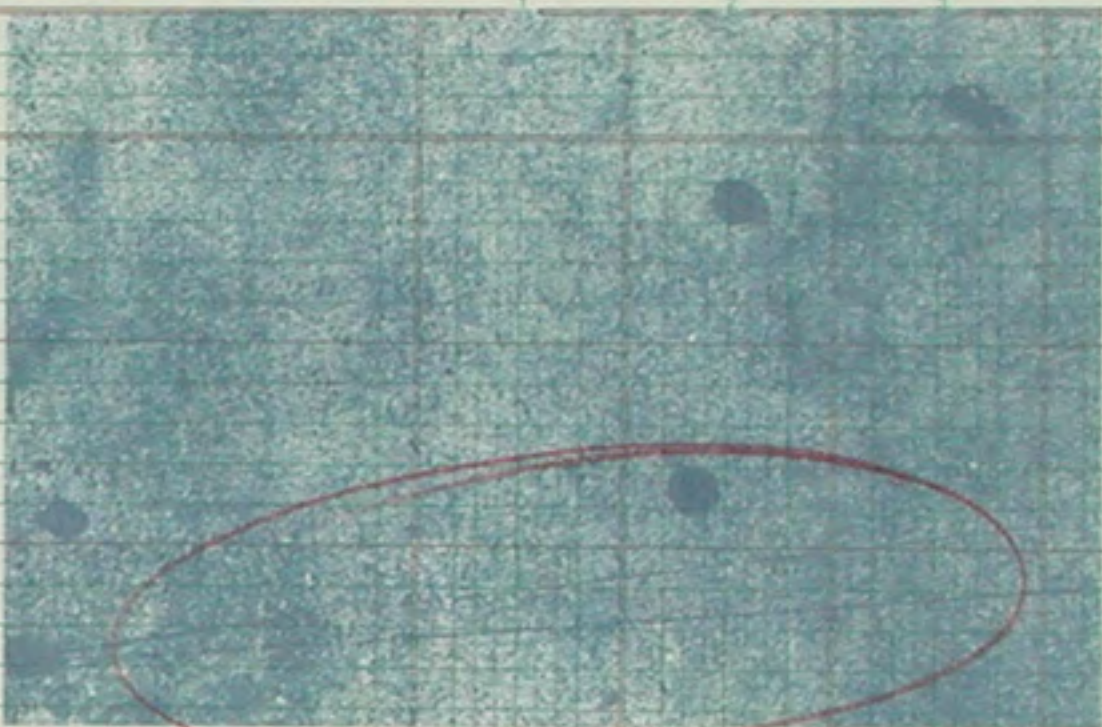
Handwritten notes at the top of the left page.

Figure 4

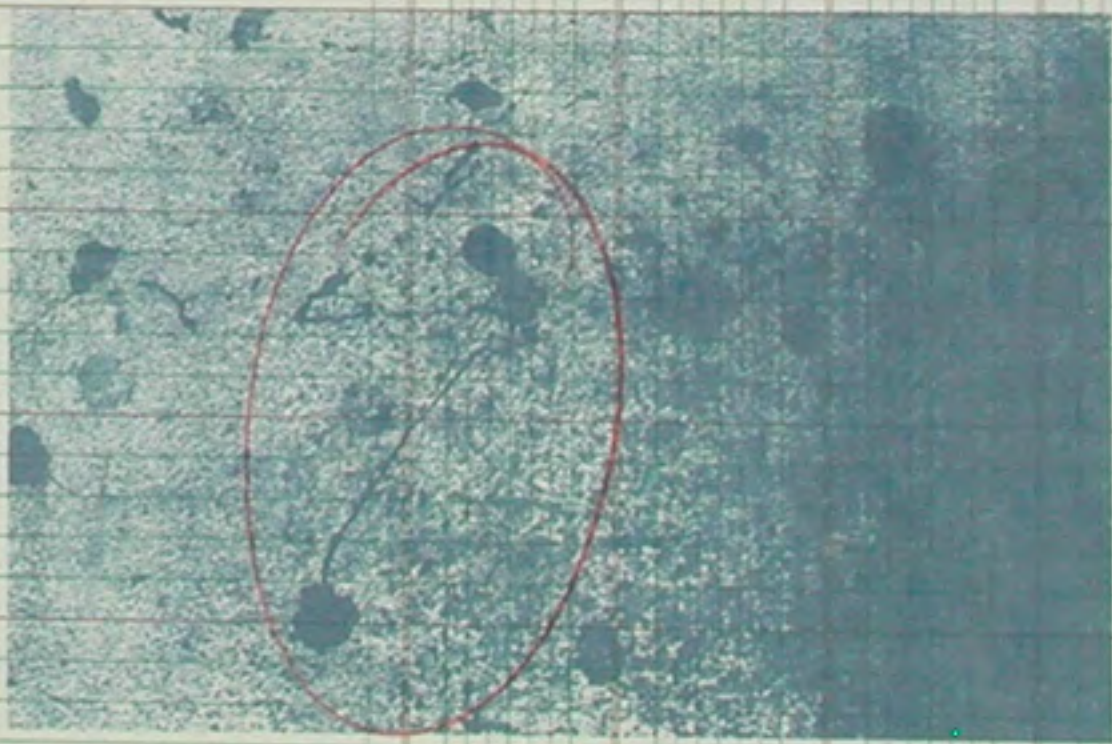
Some of the round raised spit stains will have thin, wirey offshoots. These are caused by the act of dragging and/or scraping the substance when it is still pliable matter. *Figures 3a & b*

Some of the round raised spit stains will have thin,
wire offshoots. These are caused by the act of
dragging and/or scraping the substance when it is
still pliable matter.

Initials	Date
Prepared By	
Approved By	



figures #5a & b



piss stain

If they are discovered within minutes of inception, the piss stain will glisten and form a variety of curvilinear shapes.

Various factors will determine the shape of a piss stain:

- a) weather conditions
- b) nature of the stain (spill, discard, discharge)
- c) predominant characteristics of location (curved, flat, sloped)
- d) predominant characteristics of surface (rough or smooth)
- e) earth's rotational and electromagnetic forces.

figure #6

puiss stain

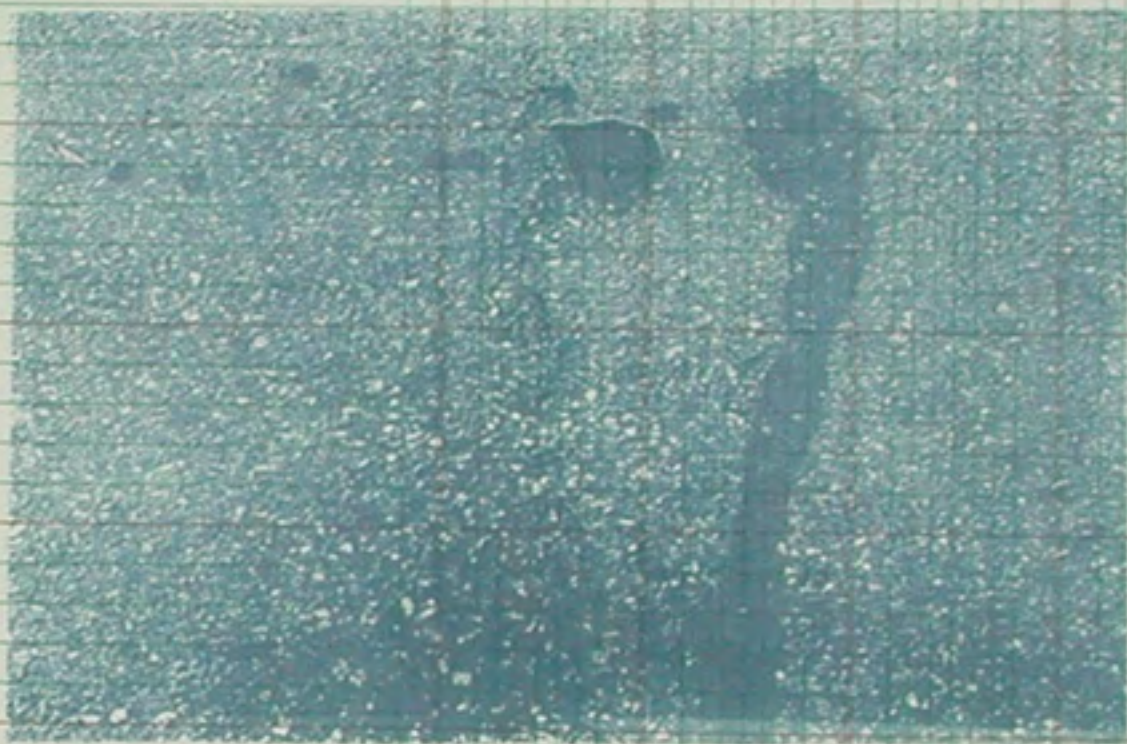
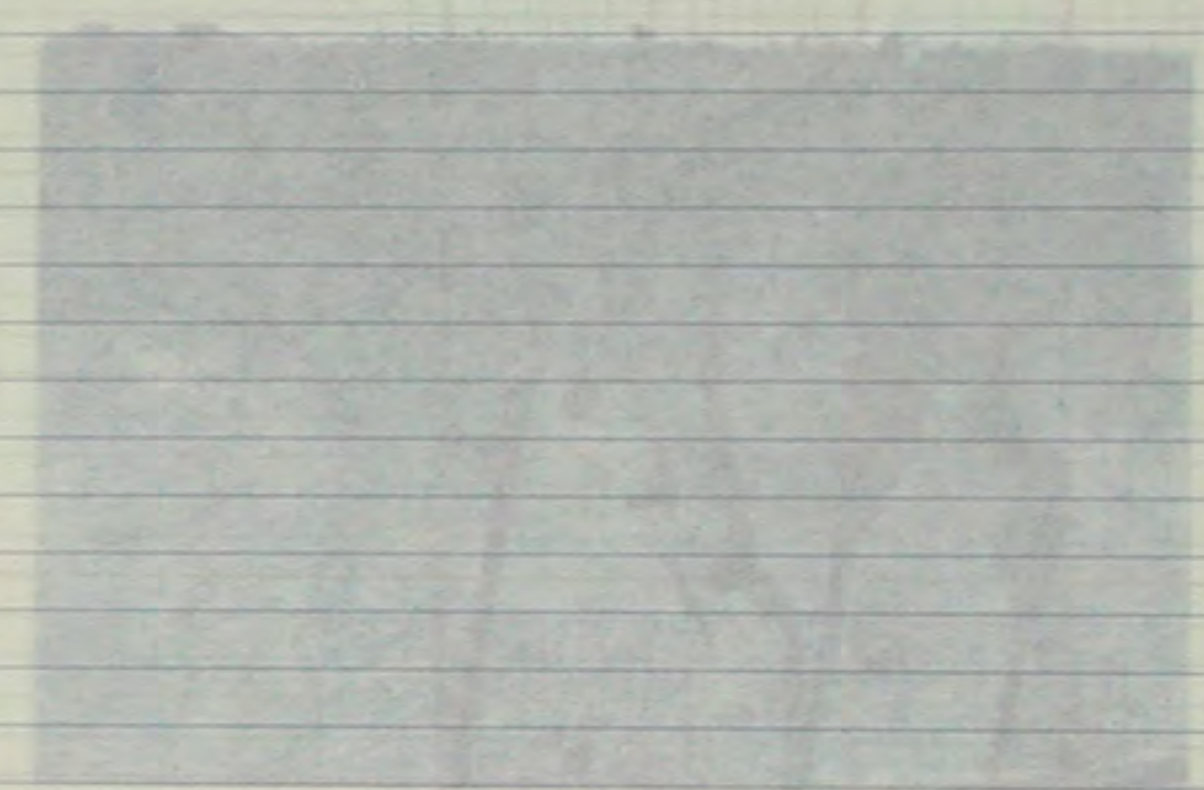


figure #6

stain:
 Various factors will determine the shape of a piss
 oval/linear shapes.
 the piss stain will glisten and form a variety of
 If they are discovered within minutes of inspection,

- a) weather conditions
- b) nature of the stain (spill, discard, discharge)
- c) predominant characteristics of location
(curved, flat, sloped)
- d) predominant characteristics of surface
(rough or smooth)
- e) earth's rotational and electromagnetic forces.

stain monster



Under ideal conditions, the spilled, discharged, or discarded liquid will fade but not disappear. It will therefore truly become a stain. This stain has little or no surface elevation and appears to be "frozen in action." The once flowing, free-form liquid is solidified.

These stains are the most animated in nature and tend to be quite large in surface area. Because of their arresting shape and size, they are commonly referred to as Stain Monsters.

Prepared By	Initials	Date
Approved By		

	1	2	3	4
1				
2				
3				
4				
5				
6				
7				
8				
9				
10				
11				
12				
13				
14				
15				
16				
17				
18				
19				
20				
21				
22				
23				
24				
25				
26				
27				
28				
29				
30				
31				
32				
33				
34				
35				
36				
37				
38				
39				
40				
41				
42				
43				
44				
45				
46				
47				
48				
49				
50				

stain monster

Prepared By	Initials	Date
Approved By		

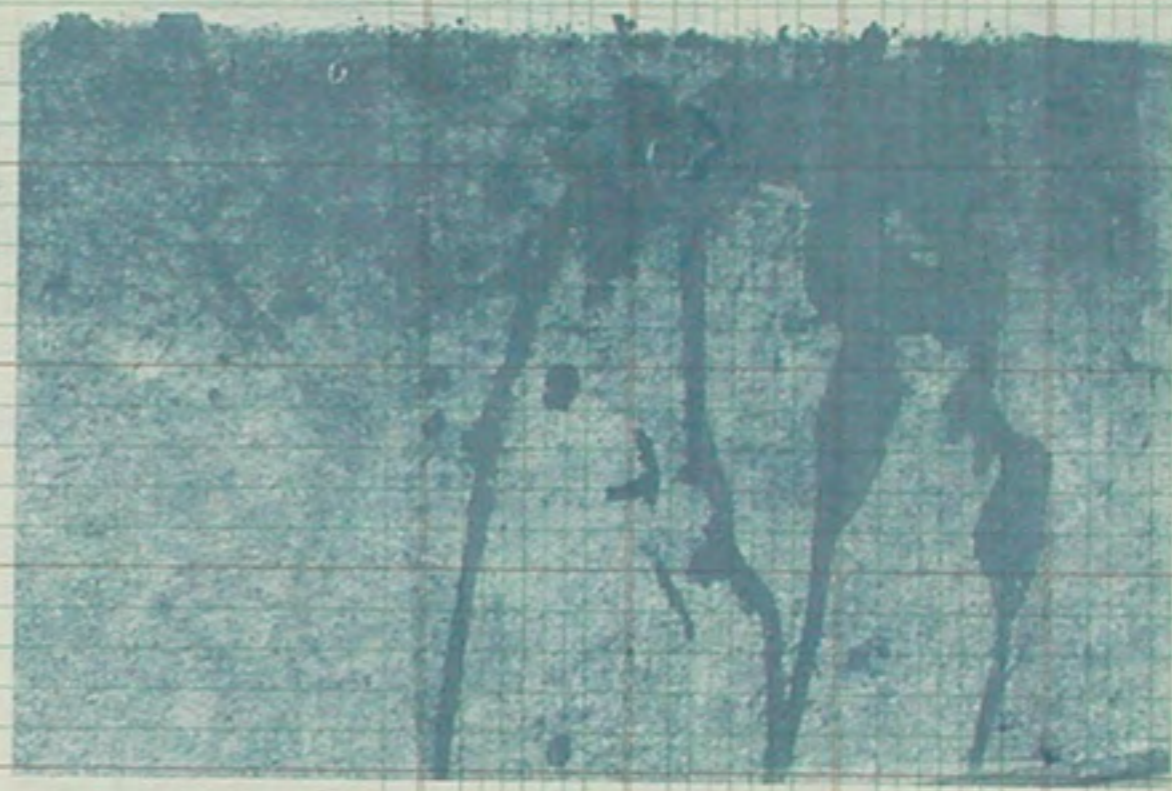


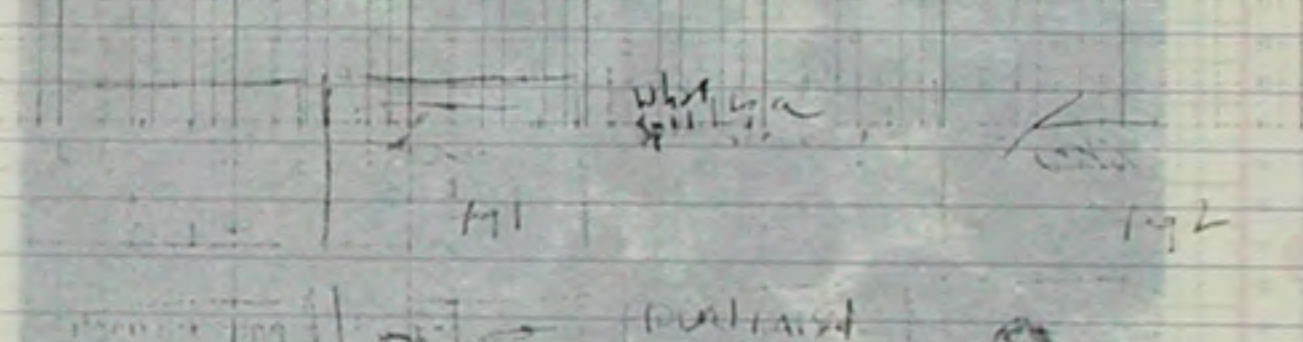
fig. #7

Under ideal conditions, the spilled, discharged, or discarded liquid will fade but not disappear. It will therefore truly become a stain. This stain has little or no surface elevation and appears to be "frozen in action." The once flowing, free-form liquid is solidified.

These stains are the most animated in nature and tend to be quite large in surface area. Because of their arresting shape and size, they are commonly referred to as Stain Monsters.

Prepared By	Initials	Date
Approved By		

The vast surface of the *city* landscape is composed of a multitude of *concrete* surfaces. *Caused by* *gasoline* *deposits* *under* *parked* *automobiles*. Although not necessarily *uniform* in *appearance*, these *U.M.* *stains* *of* *the* *city* *are* *often* *found* *in* *clusters* *of* *small* *areas*.



The diffused, oily stain is caused by gasoline deposits. This stain is generally not found on pedestrian walkways, but in the middle of roads or under parked automobiles. Diffused, oily stains tend to be circular in form with soft, feathered edges. Similar to the round, raised stain, the diffused oily stains often form clusters of circular patterns. They are heavily concentrated in relatively small surface areas.

oily, diffused stain

Prepared By	Initials	Date
Approved By		

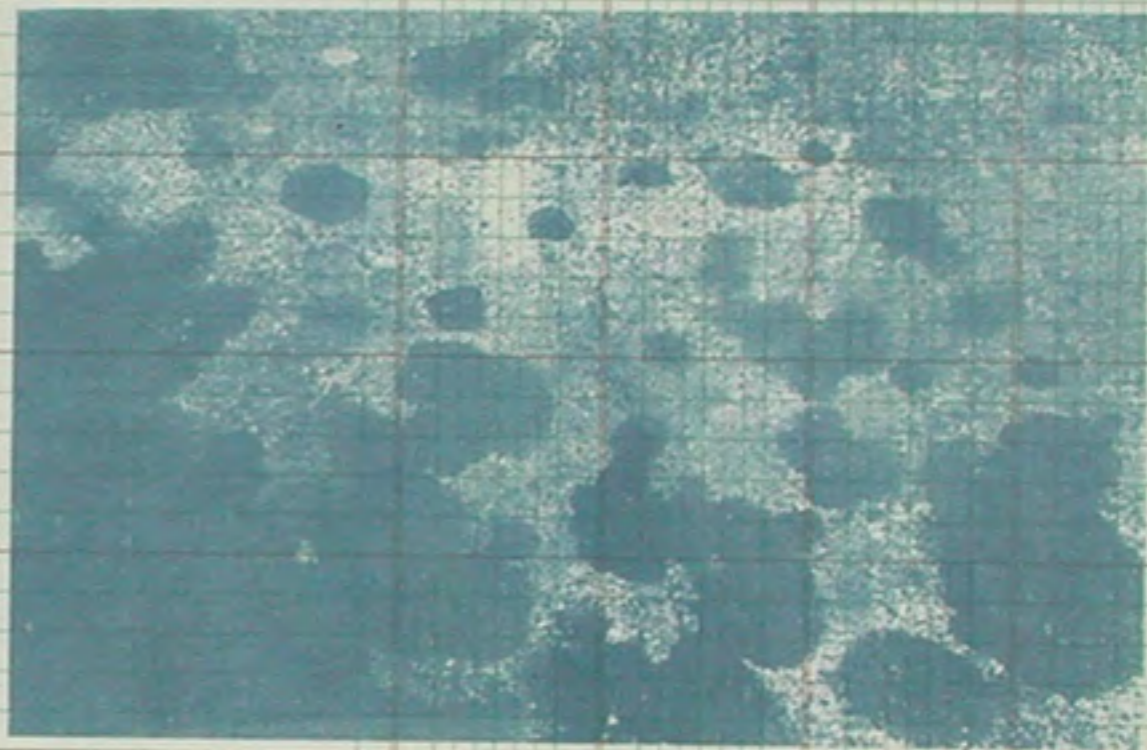


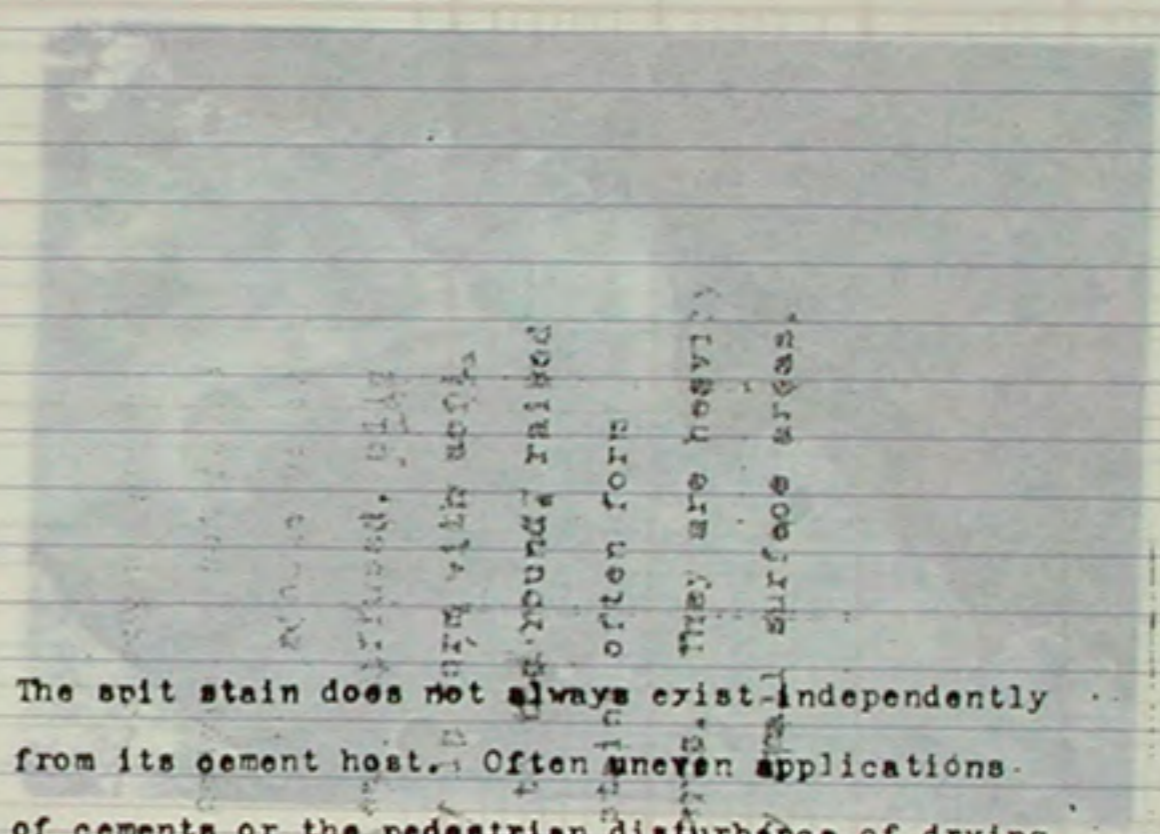
figure #8

concentrated in relatively small surface areas. clusters of circular patterns. They are heavily stain, the diffused oily stains often form feathered edges. Similar to the round, raised stains tend to be circular in form with soft, or under parked automobiles. Diffused, oily pedestrian walkways, but in the middle of roads deposits. This stain is generally not found on The diffused, oily stain is caused by gasoline

The vast majority of the stains found on the surface of the road are caused by gasoline. They are generally not found on pedestrian walkways, but in the middle of roads or under parked automobiles. Diffused, oily stains tend to be circular in form with soft, feathered edges. Similar to the round, raised stain, the diffused oily stains often form clusters of circular patterns. They are heavily concentrated in relatively small surface areas.

Prepared By	Initials	Date
Approved By		

The Stained Landscape



The spit stain does not always exist independently from its cement host. Often uneven applications of cements or the pedestrian disturbance of drying cement (see other categories of underfoot materialization) will create distortions and textures that, when solidified, will result in raised and/or depressed surfaces which will more readily collect debris and liquids. The spit stain's location within the context of its environment is known as the stained landscape.

Prepared By
Approved By

WILSON JONES
STEVE GREEN
TINA BURY

the Stained Landscape

Prepared By	Initials	Date
Approved By		

The split stain does not always exist independently from its cement host. Often uneven applications of cement or the pedestrian disturbance of drying cement (see other categories of underfoot material-irregularity) will create distortions and textures that when solidified, will result in raised and/or depressed surfaces which will more readily collect debris and liquids. The split stain's location within the context of its environment is known as the stained landscape.

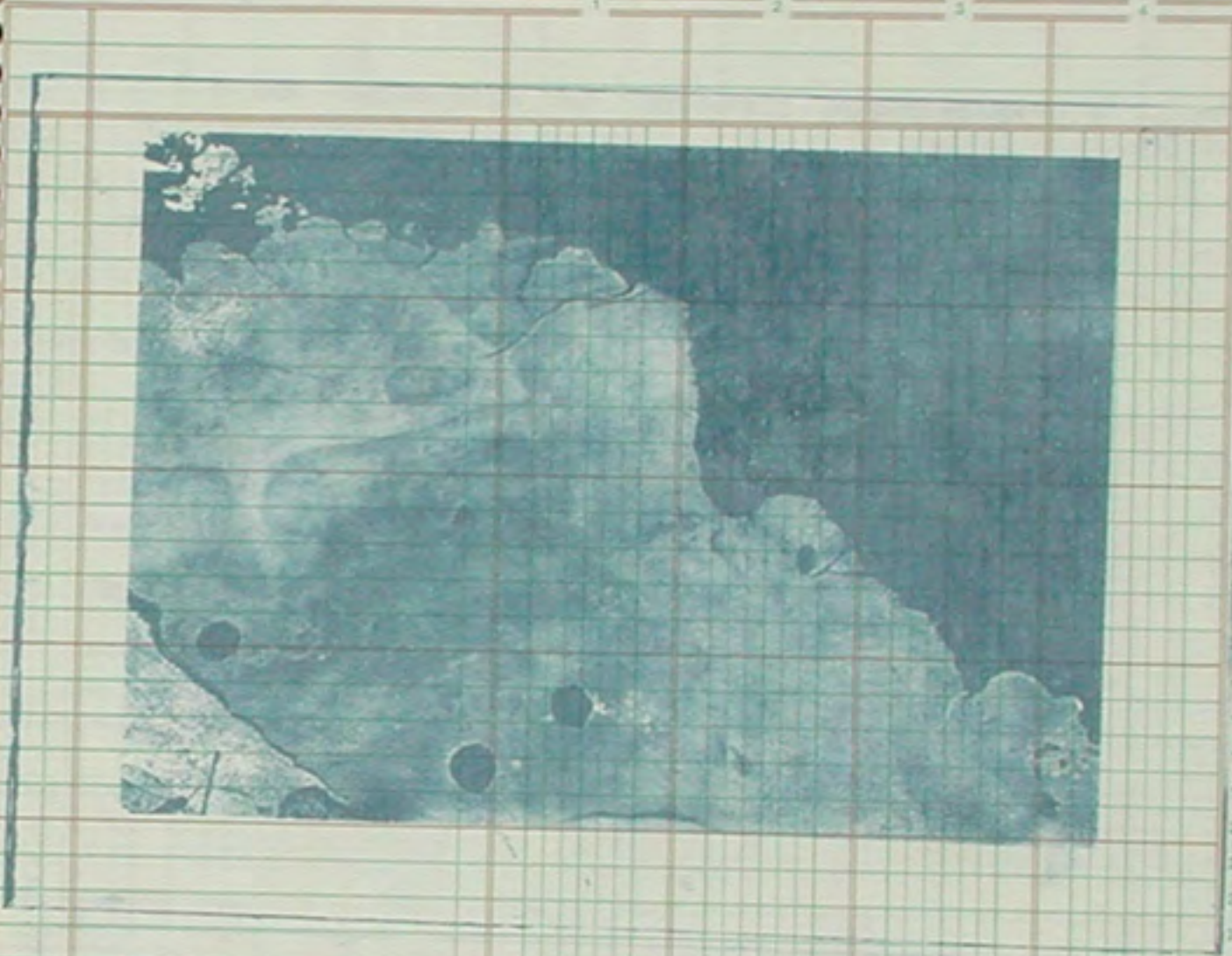


fig. #9

Prepared By	Initials	Date
Approved By		

crosswalk mutation

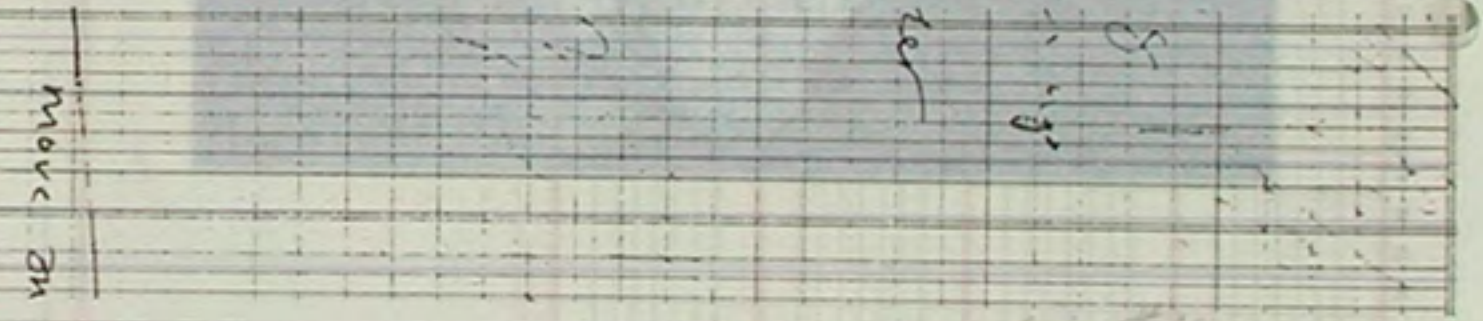
Prepared By	Initials	Date
Approved By		

OTHER CATEGORIES OF UNDERFOOT MATERIALIZATION

The vast surface of the Stained Landscape is comprised of a multitude of cement malformations which are caused

- by :
- Accumulation
 - Deterioration
 - Excess of Application
 - Human Intervention

**Although not necessarily the result of stain formations, Underfoot Materializations act in accordance with the spit stains to form the Stained Landscape.



Other Categories of Underfoot Materialization include:

- Crevice filling (excess of application)
 - Cement Cracks (deterioration)
 - Crosswalk Mutations (deterioration, excess of application)
 - Decorative Elements (i.e., graffiti, litter)
- ** an unequivocal sign of human presence and intervention

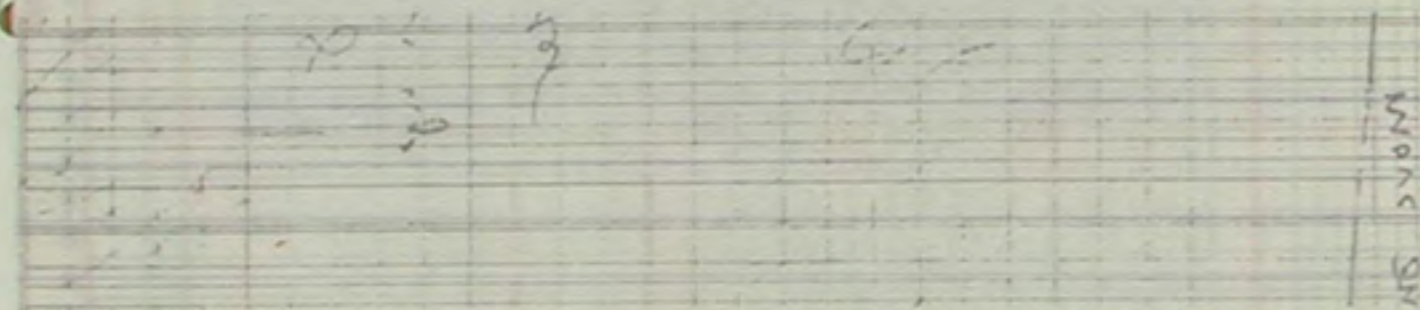
Application

OTHER CATEGORIES OF UNDERFOOT MATERIALIZATION

The vast surface of the Stained Landscape is comprised of a multitude of cement malformations which are caused

- Accumulation
- Deterioration
- Excess of Application
- Human Intervention

Although not necessarily the result of stain formations, Underfoot Materializations act in accordance with the split stains to form the Stained Landscape.

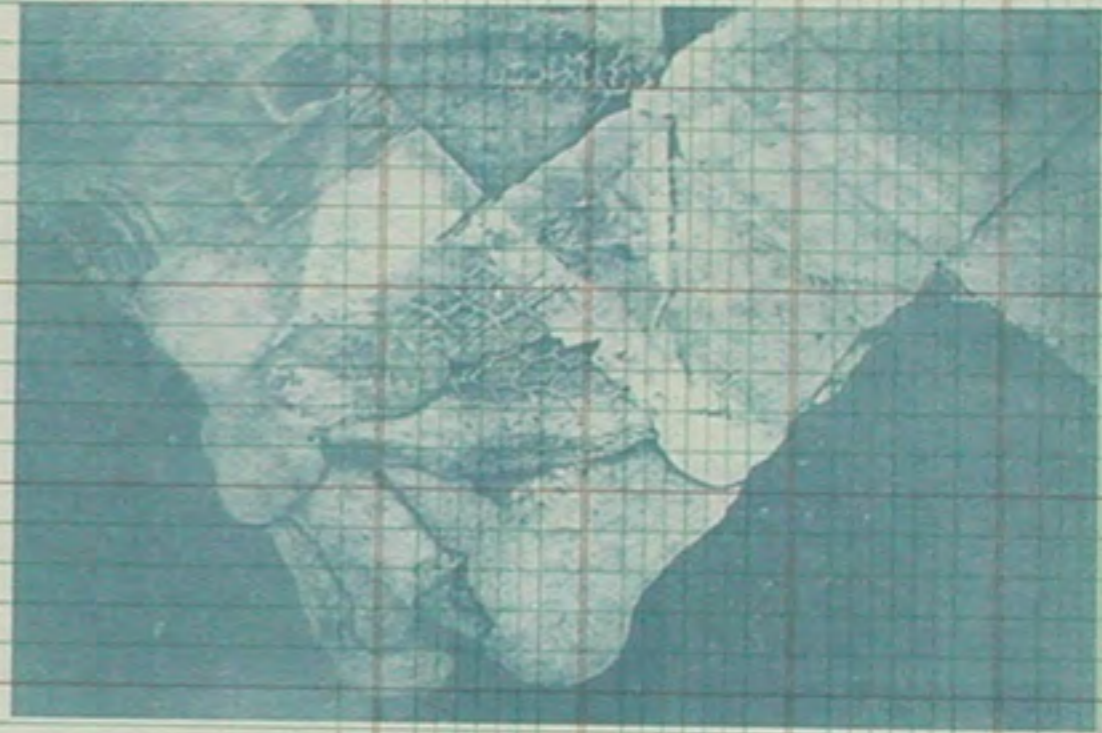


Other Categories of Underfoot Materialization include:

- Crack Filling (excess of application)
 - Cement Cracks (deterioration)
 - Crosswalk Mutations (deterioration, excess of application)
 - Decorative Elements (i.e., Graphtite, litter)
- ** an unequivocal sign of human presence and intervention

crosswalk mutation

Prepared By	Initials	Date
Approved By		



*fig. #10
"The Excess of Application"*

WILSON JONES

STODOLSKA

TIM BERRY

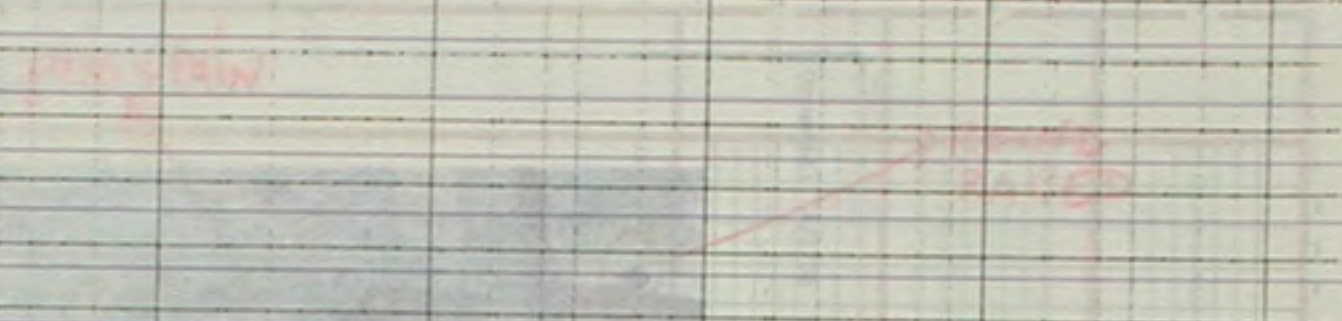
Prepared By	Initials	Date
Approved By		

Chemical...

1 2 3 4

3
4
5
6
7
8
9
10
11
12
13
14
15
16
17
18
19
20
21
22
23
24
25
26
27
28
29
30
31
32
33

Identifying a fat stain



APPENDIX

Salt

Fluorom

pink stain

Identifying a fat stain

... ..

... ..

... ..

Identifying a Spit Stain

Prepared By DET 3/10
Approved By GA

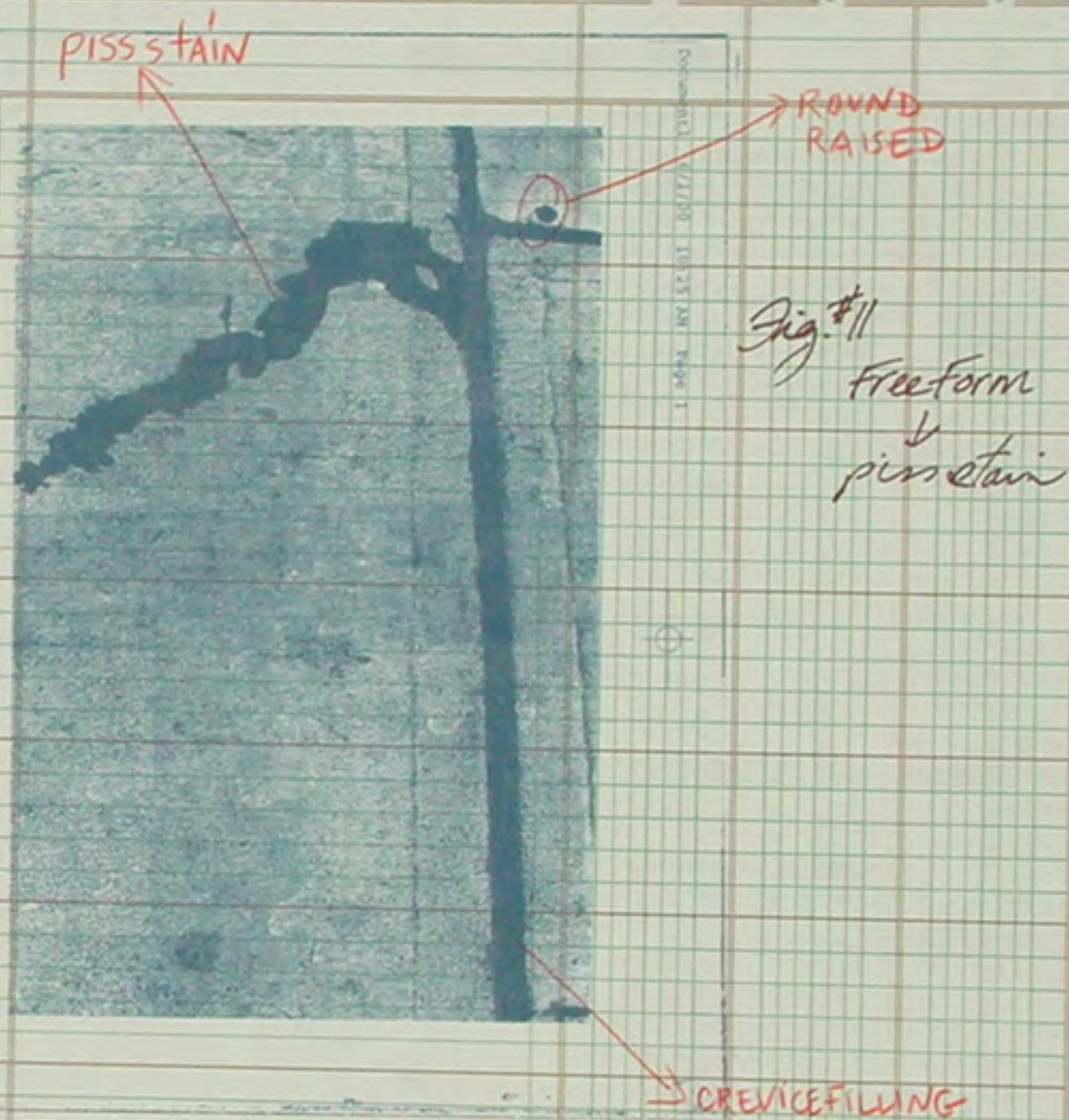


Figure #11 is a classic example of a free form piss stain, most likely caused by dog urine. This striking serpentine shape.....

APPENDIX

CLASSIFICATION TABLE

ROUND RAISED
SPIT STAIN

FREE FORM STAIN

Piss Stain

Diffused
Oily
Stain

Stain Monster

STAINED LANDSCAPE

ROUND RAISED STAIN
&
FREE FORM STAIN

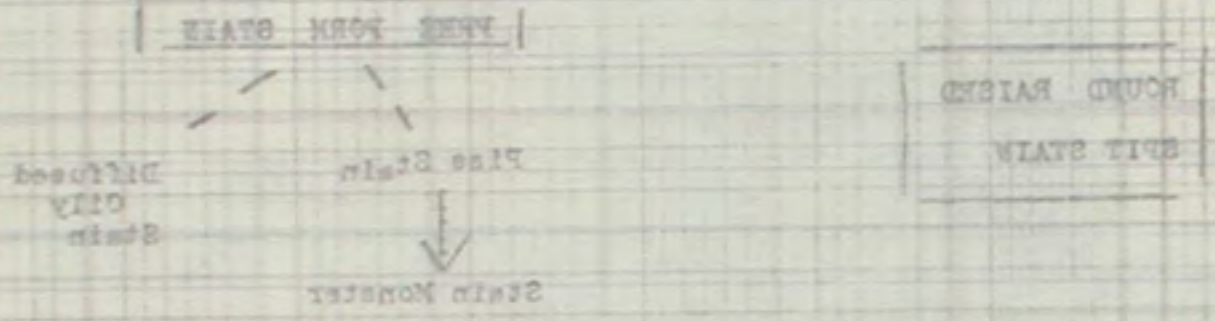
+

UNDERFOOT MATERIALIZATION

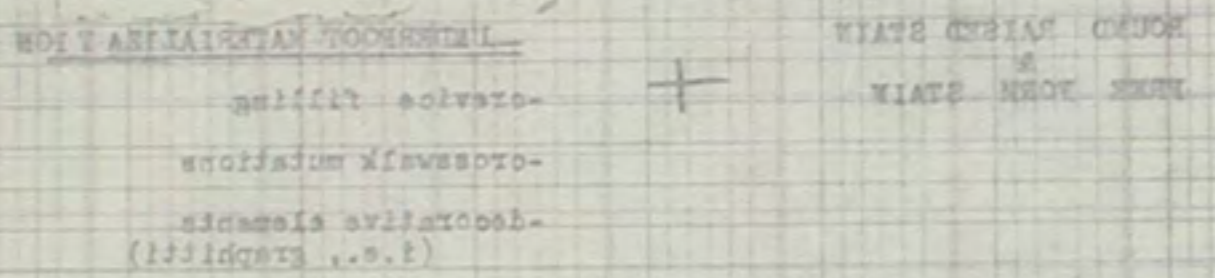
- crevice filling
- crosswalk mutations
- decorative elements
(i.e., graffiti)

THE
WILSON
JONES
CORP
JAW

CLASSIFICATION TABLE



STAINED LANDSCAPE



Classification

THE STAINED LANDSCAPE

UNDERFOOT MATERIALIZATION

CROSS-CEMENT CRACKS between distribution Accumulation Decorative SPAN

WALKS CRACKS FILLING

STAIN	TYPE	LOCATION	STATUS	OTHER	STATUS	OTHER	STATUS	OTHER
77	XXXX				X			
78	XXXX				X			
79	XXXX				X			
80	XXXX				X			
81	XXXX				X			
82	XXXX				X			
83	XXXX				X			
84	XXXX				X			
85	XXXX				X			
86	XXXX				X			
87	XXXX				X			
88	XXXX				X			
89	XXXX				X			
90	XXXX				X			
91	XXXX				X			
92	XXXX				X			
93	XXXX				X			
94	XXXX				X			
95	XXXX				X			
96	XXXX				X			
97	XXXX				X			
98	XXXX				X			
99	XXXX				X			
100	XXXX				X			

Classification of

FREE FORM STAIN

DATE MO/YR	Title, LOCATION	FIG #	ROUND RAISED	OILY	PISS	MONSTER
7 99	rissé sanguinose, Brooklyn 1		xx			✓
5 98	After Antonioni, Manhattan 2 (East 2nd St)					✓
1 00	ominous stain, Jersey City #3				xx	
1 00	round raised, close-up-(J.c.) (close-up)		xx			
11 99	wirey off-shoots, MEMPHIS #5		xx			
?	inception stain, UNKNOWN #6				xx	
7 99	Lotte dei galli, Brooklyn #7		X			✓
?	NEbuli, UNKNOWN #8			✓		
5 98	clam shell interior, #9 Bleeker Street		XX			
12 99	Excess of Application, Soho #10					
4 98	Sea Horse, Manhattan		X		X	
EXHIBITED:						
7 99	Lotte dei galli, Bklyn		X			✓
?	Stain dinosaur, UNKNOWN					✓
NOT PICTURED:						
12 98	Bananna Peel-Chinatown	N/A	X			
7 99	Folded Crosswalk-Brooklyn					X
7 99	Stained Stairs- L train					X
7 99	African Head- Brooklyn					
12 99	Hangman-Memphis					
10 98	VAOEM, Queens		X			
8 99	Inverted Stain, Rome		X			
8 99	Stain w/ Pill Pack, Rome		X			
8 99	Devil's Fork, Rome				X	
7 99	Encrusted pothole, Brooklyn					
12 99	Patterned Pitch, Jersey City				X	
4 98	Equation of a Kitten, Manhatt					
11 99	Kandinsky/Calder, Mercer St.		X	X		
1 00	Barber Shop, Jersey City		X			
3 00	Fried Egg, Portland		X			

Spit Stain

THE Stained Landscape

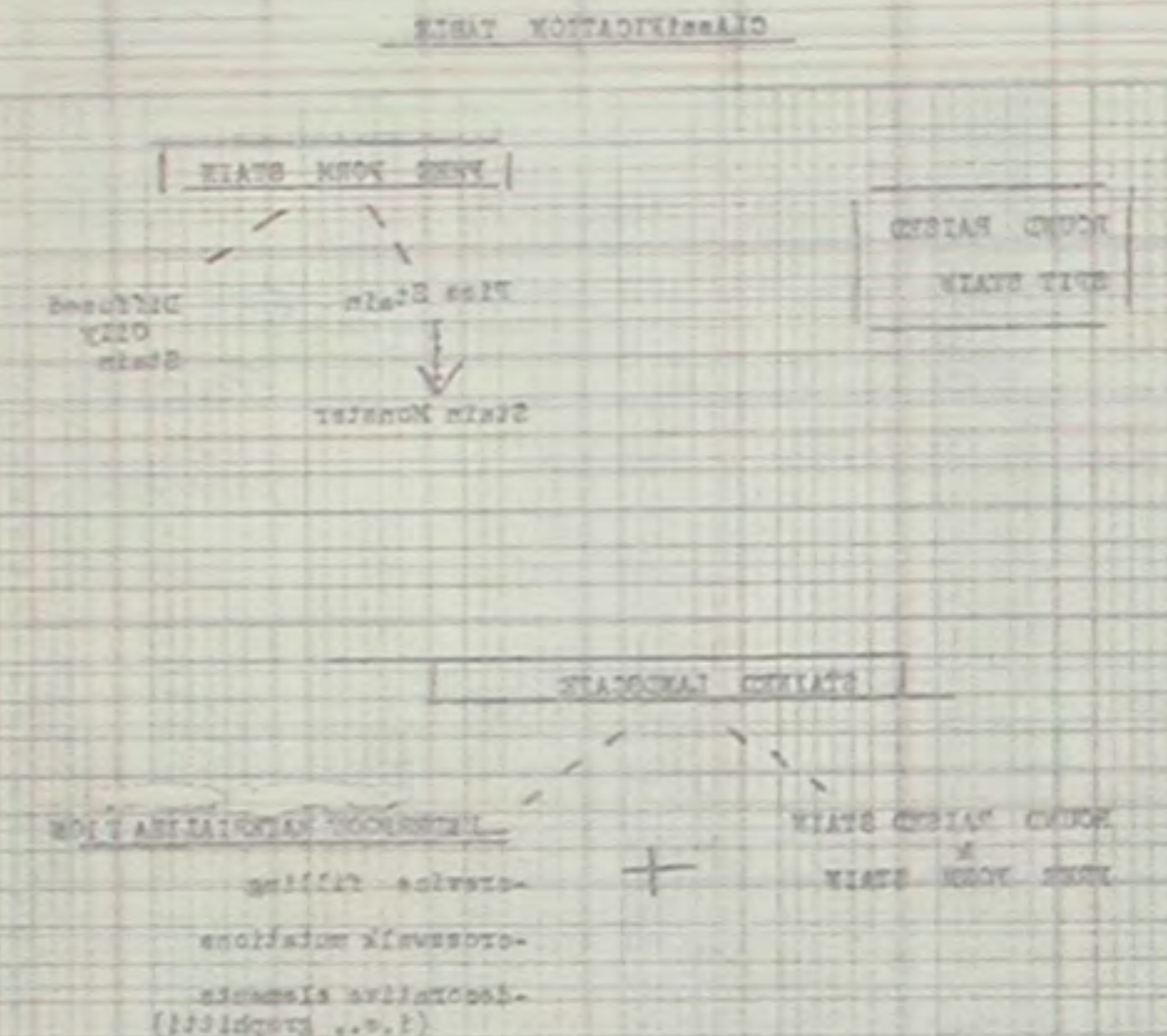
UNDERFOOT MATERIALIZATION

CROSS-WALKS	CEMENT CRACKS	CREVICE FILLING	deterioration	disturbance	Accumulation	Decorative elements	SPAN (LONGEVITY)
		XX					XXX
X		XX					XXX
						litter	---
							XXXXX
							XXXXX
		X					XXX
	X	XXX		✓	✓		XXXXX
✓		XXX			✓		XXXXX
		X					XXX
						litter	XXX
							X
		✓				peev	X
✓				✓			fixed
							XXXXX
	✓	✓				graffiti	XXX
		✓					XXXXXX
		✓					XXXXXX

✓		✓		?	?	pothole	XXXXXX

	✓	✓					XX
					✓		XXXXX

(litter graffiti) 7/00



Classification of Stain

DATE MO/YR	Title, LOCATION	FIG #	ROUND RAISED	FREE FORM STAIN		
				OILY	PISS	MONSTER
7 99	risse sanguinose, Brooklyn 1		xx			✓
5 98	After Antonioni, Manhattan 2 (East 2nd St)					✓
1 00	ominous stain, Jersey City #3				xx	
1 00	round raised, close-up (J.O.) (close-up)		xx			
11 99	wirey off-shoots, MEMPHIS #6		xx			
?	inception stain, UNKNOWN #6				xx	
7 99	Lotte dei galli, Brooklyn #7		X			✓
?	Knoll, UNKNOWN #8				✓	
5 99	clam shell interior, Bleeker Street #9		XX			
12 99	Excess of Application, Soho #10					
4 98	Sea Horse, Manhattan		X		X	
EXHIBITED:						
7 99	Lotte dei galli, Bklyn		X			✓
?	Stain dinosaur, UNKNOWN					✓
NOT PICTURED:						
12 98	Banana Peel-Chinatown	NA	X			
7 99	Folded Crosswalk-Brooklyn					
7 99	Stained Stairs- I train					X
	African Head- Brooklyn					X
12 09	Hangan-Memphis					
10 98	VAOEN, Queens		X			
3 99	Inverted Stain, Rome		X			
8 99	Stain w/ Pill Pack, Rome		X			
8 99	Devil's Fork, Rome				X	
7 99	Encrusted pothole, Brooklyn					
12 99	Patterned Pitch, Jersey City					
4 98	Equation of a Kitten, Marhatt				X	
11 99	Kandinsky/Calder, Mercer St.		X		X	
1 00	Barber Shop, Jersey City					
3 00	Fried Egg, Portland		X			

THE STAINED LANDSCAPE

INTERFOOT MATERIALIZATION
CROSS- WALKS
CEMENT CRACKS FILLING

CAUSES

degradation disturbance Accumulation
Decorative SPAN ELEMENTS (LONGEVITY)

DATE MO/YR	STAIN	STAIN	STAIN	STAIN	STAIN	STAIN
1		XX				
2	X	XX				
3						
4						
5						XXXX
6						XXXX
7						XXXX
8						XXX
9						X
10	X	XXX				XXXX
11						X
12	✓					XXXX
13						X
14						
15						
16						XXX
17						XXX
18						
19						
20						
21						
22						
23						
24	✓					peev X
25						
26	✓					fixed
27						XXX
28						XXXXXX
29						XXXXX
30						XXXXX
31						
32						
33	✓					pothole XXXXX
34						
35						
36						
37	✓					XX
38						XXXXXX
39						
40						

graffiti

litter

litter

peev

graffiti

pothole

STAIN

Decorative SPAN ELEMENTS (LONGEVITY)

XXXX

XXXX

XXX

XXXX

X

XXX

XXX

XXXX

XXXX

Classification

DATE	LOCATION	# RAISED	FIG ROND	FREE FORM STAIN
7 98	risee sanfransosa, brooklyn 1	xx		
2 98	After Antononi, Manhattan 2 (cont'd. 2)			
1 00	ominous stain, Jersey City 23	xx		
1 00	round raised, close-up (L.O.V.) (close-up)	xx		
11 98	wirey off-shoots, MANHATTAN 25	xx		
4 98	Inspection stain, UNKNOWN 26	xx		
4 98	lotta del galli, Brooklyn 27	x		
2 98	REBUILT, UNKNOWN 28			
2 98	clam shell interior, BLEEKER STREET 29	xx		
12 98	Excess of Application, Soho #10			
4 98	Sea Horse, Manhattan	x		
FORBIDDEN:				
7 98	lotta del galli, Brooklyn	x		
NOT PICTURED:				
12 98	Bananna Peel-Chinatown	x		
4 98	Folded Groszwalk-Brooklyn			
7 98	Stained Stairs - I train	x		
12 98	African Head - Brooklyn	x		
10 98	Hangan-Memphis			
10 98	VAOEM, Queens	x		
4 98	Inverted Stain, Rome	x		
4 98	Stain w/ Pill Pack, Rome	x		
4 98	Devil's Fork, Rome	x		
7 98	Encrusted potatoe, Brooklyn			
12 98	Patterned Pitch, Jersey City			
7 98	Equation of a Kitten, Manhatt	x		
11 98	Handlines/Calder, Mercer St.	x		
1 00	Beiber Shop, Jersey City			
1 00	Tried Egg, Portland	x		

Independent



CLASSIFICATION OF A SPIT STAIN
by
ellie ga

***the summation of a 2 year study,
this journal was executed at
Women's Studio Workshop
Rosendale, NY
during an artist's residency funded
by the Geraldine R. Dodge Foundation.***

June-July 2000

4/25

---*-----edition of 25